



ProStone[®]

Carolina Collection



Oak Island Rough Ledge



Shoreline LedgeStone

There's no place like home.

ProStone veneer is a manufactured stone veneer that gives you the durable beauty and authentic look of natural stone at affordable prices. ProStone veneer's natural textures and colors enhance any building inside and out. And the appeal of ProStone veneer comes without compromise: it meets the most stringent code requirements and is backed by a 50-year limited warranty.

ProStone veneer is molded from real stone so the texture is detailed, varied and remarkably lifelike. From rugged Rough Ledge to sleek Easy Fit Savannah Ledge, ProStone veneer offers a sophisticated look you can feel good about from every angle.

"With ProStone veneer's natural textures and variety of colors it was an obvious choice for us. The quality and aesthetic appearance was outstanding. As a matter of fact, it was so successful our client asked us to specify ProStone on additional projects."

Anthony E. Young
Principal, Indigo Architecture, Inc.

Ledgestone

Our most popular style. The extensive palette of rich texture and subtle variations of color provide a look that makes a bold statement.

HEIGHT	LENGTH	CORNER RETURNS
1 1/2" – 4"	6" – 20"	4" – 12"



Bayshore Ledgestone
tight-fitted mortar joints



Breakwater Ledgestone
1/2" mortar joints



Columbia Ledgestone
tight-fitted mortar joints



Estate Vintage Wine Ledgestone
tight-fitted mortar joints



High Point Ledgestone
1/2" mortar joints



Oak Island Ledgestone
tight-fitted mortar joints



Sawgrass Ledgestone
tight-fitted mortar joints



Shoreline Ledgestone
tight-fitted mortar joints

Rough Ledge

Rugged and irregular shapes
create a unique, informal look
that works great indoors and out.

HEIGHT	LENGTH	CORNER RETURNS
1 1/2" – 6"	4" – 20"	4" – 12"



Bayshore Rough Ledge
tight-fitted mortar joints



Breakwater Rough Ledge
1/2" mortar joints



Columbia Rough Ledge
1/2" mortar joints



Estate Vintage Wine Rough Ledge
tight-fitted mortar joints



High Pointe Rough Ledge
tight-fitted mortar joints



Oak Island Rough Ledge
tight-fitted mortar joints



Sawgrass Rough Ledge
tight-fitted mortar joints



Shoreline Rough Ledge
tight-fitted mortar joints

Field Rubble

Uniquely fashioned stones create a look that is appropriate for a variety of design opportunities ranging from contemporary to traditional.

HEIGHT	LENGTH	CORNER RETURNS
2" – 11 1/2"	4" – 20"	3" – 12"



Oak Island Field Rubble
1/2" mortar joints



Shoal Creek Field Rubble
1/2" mortar joints



Sawgrass Field Rubble
1/2" mortar joints



Sand Bluff Field Rubble
1/2" mortar joints

Easy Fit Savannah Ledge

Tightly fitted to form a precise yet rugged texture, Easy Fit Savannah Ledge provides color and shadow for a variety of designs. It comes grouped in modular components of equal height to make installation quick and easy.

HEIGHT	LENGTH	CORNER RETURNS
6"	9" – 12"	3" – 12"



Bayshore Easy Fit Savannah Ledge
tight-fitted mortar joints



Breakwater Easy Fit Savannah Ledge
tight-fitted mortar joints



Estate Vintage Wine Easy Fit Savannah Ledge
tight-fitted mortar joints

Accessories

Architectural Stone Trim, Capstones & Hearthstones

Whether you're finishing a fireplace or adding a border to a foundation or doorway, our Cultured Stone® accessory collection are designed to match all of our ProStone® veneer product families. Made from the same durable materials, these architectural details come in coordinating colors and are easy to install.



**ELECTRICAL BOX:
LARGE LIGHT FIXTURE**
Gray (shown), Nightfall™,
Sable, Taupe
9 1/2" x 15" x 1 3/4"



**ELECTRICAL BOX:
STANDARD LIGHT FIXTURE**
Gray, Nightfall™, Sable (shown),
Taupe
8" x 10" x 1 3/4"



**ELECTRICAL BOX:
SINGLE RECEPTACLE**
Gray, Nightfall™, Sable,
Taupe (shown)
6" x 8" x 1 3/4"



WATERTABLE/SILL
Champagne, Gray, Nightfall™,
Sable (shown), Taupe
2 1/2" x 18" x 3"



FLAGSTONE PIER CAP
Champagne (shown), Gray,
Nightfall™, Sable, Taupe
24" x 24", 32" x 32"
2 1/2" - 4 1/2" thickness at peak



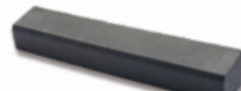
KEystone
Champagne, Gray, Nightfall™,
Sable, Taupe (shown)
5 1/2" x 8" x 10" x 1 7/8"



TRIM STONE
Champagne, Gray (shown),
Nightfall™, Sable, Taupe
6" x 8" x 1 7/8"



TUSCAN LINTEL
Champagne, Gray, Nightfall™,
Sable (shown), Taupe
6" x 22" x 2 5/8"



CAST-FIT® WATERTABLE/SILL
Carbon (shown), French Gray™,
Intaglio, Parchment™, Vellum
2 1/2" x 18" x 3"



FLAGSTONE SLOPED WALL CAP
Champagne, Gray, Nightfall™,
Sable (shown), Taupe
12" x 20", 16" x 20"
2" - 2 3/4" thickness at peak

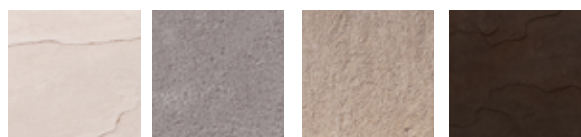


**FLAT TEXTURED
CAPSTONES®**
Champagne, Gray (shown),
Nightfall™, Sable, Taupe
10" x 20", 12" x 20"
2" thickness



HEARTHSTONE
Blond, Chardonnay (shown), Cream,
Gray, Marsh, Nightfall™, Sable
19" x 20" x 1 3/4"

Trim and Capstone colors



Champagne

Gray

Taupe

Nightfall



Sable

Hearthstone colors



Blond

Chardonnay

Cream

Gray



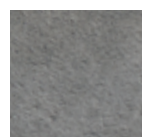
Marsh

Nightfall

Sable

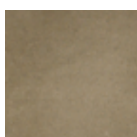
Cast-Fit® Watertable/Sill Colors

NEW COLOR

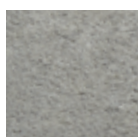


Carbon

NEW COLOR



French Gray

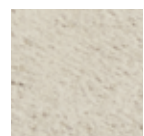


Intaglio



Parchment

NEW COLOR



Vellum

Coordinating Color Guide

We've designed our architectural accents to complement our textures and colors beautifully. Use the chart below as a guide to selecting the architectural accents that best harmonize with the Cultured Stone® by Boral® veneer products you have chosen.

	TRIM & CAPSTONE COLOR	HEARTHSTONE COLOR
LEDGESTONE™		
BAYSHORE	TAUPE, SABLE	GRAY, NIGHTFALL, MARSH
BREAKWATER	GRAY, NIGHTFALL	GRAY, NIGHTFALL, MARSH
COLUMBIA	GRAY, NIGHTFALL, TAUPE, SABLE	CHARDONNAY, GRAY, NIGHTFALL, MARSH
ESTATE VINTAGE WINE	TAUPE, SABLE	CHARDONNAY, MARSH
HIGH POINTE	TAUPE, SABLE	CHARDONNAY, MARSH
OAK ISLAND	GRAY, NIGHTFALL	GRAY, NIGHTFALL
SAWGRASS	TAUPE, SABLE	GRAY, NIGHTFALL, MARSH
SHORELINE	TAUPE, SABLE	BLONDE, MARSH
EASY FIT SAVANNAH LEDGE		
BAYSHORE	TAUPE	GRAY, NIGHTFALL, MARSH
BREAKWATER	GRAY, NIGHTFALL	GRAY, NIGHTFALL, MARSH
ESTATE VINTAGE WINE	TAUPE, SABLE	CHARDONNAY, MARSH
ROUGH LEDGE		
BAYSHORE	TAUPE, SABLE	GRAY, NIGHTFALL, MARSH
BREAKWATER	GRAY, NIGHTFALL	GRAY, NIGHTFALL, MARSH
COLUMBIA	GRAY, NIGHTFALL, TAUPE, SABLE	CHARDONNAY, GRAY, NIGHTFALL, MARSH
ESTATE VINTAGE WINE	TAUPE, SABLE	CHARDONNAY, MARSH
HIGH POINTE	TAUPE, SABLE	MARSH
OAK ISLAND	GRAY, NIGHTFALL	GRAY, NIGHTFALL
SAWGRASS	TAUPE, SABLE	GRAY, NIGHTFALL, MARSH
SHORELINE	TAUPE, SABLE	BLONDE, MARSH
FIELD RUBBLE		
OAK ISLAND	GRAY, NIGHTFALL	GRAY, NIGHTFALL
SHOAL CREEK	GRAY, NIGHTFALL	GRAY, NIGHTFALL
SAND BLUFF	TAUPE, SABLE	MARSH
SAWGRASS	TAUPE, SABLE	GRAY, NIGHTFALL, MARSH

Dimensions listed are nominal. Please check the actual product size to ensure the right fit for your application.

Note: Flat Textured Capstones can be used for fireplace hearths. Hearths not suitable for foot traffic.

1.800.255.1727 | www.prostoneveneer.com



The product colors you see are as accurate as current photography and printing techniques allow. We suggest you look at product samples before you select colors.

© 2018 ProStone